



## SINGLE SCREEN DOOR INSTALLATION INSTRUCTIONS

Required:

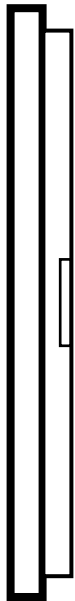


Cordless Drill



Step Stool (optional)

Included:



Housing w/ mesh  
and pull bar



Side Profile  
w/ magnet



Top Track



Bottom Track

2 Handles + 1 Boot

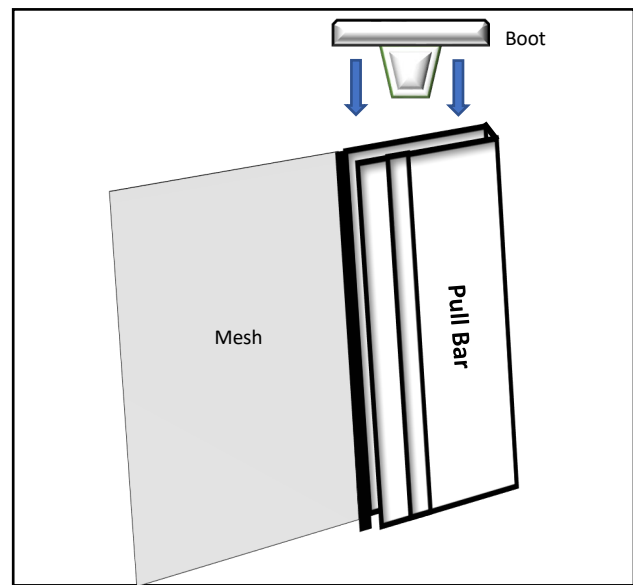
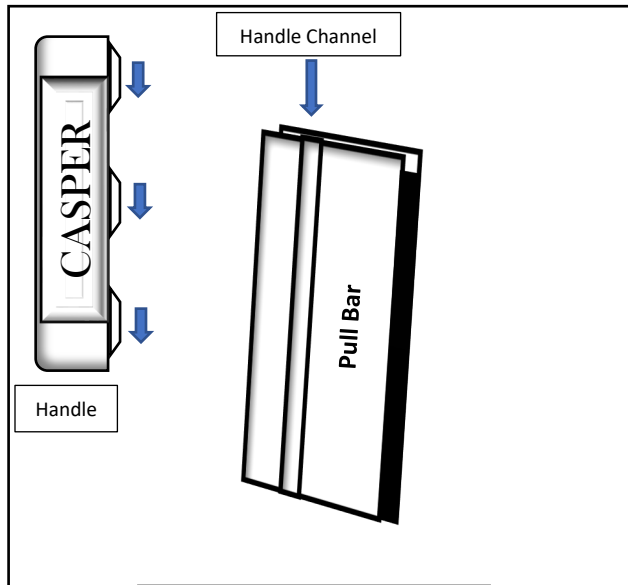


#2 Square Head  
Self-Tapping  
Screws

**DRILLBIT  
INCLUDED**

# CASPER

THE DISAPPEARING SCREENS



Please refer to our videos at [www.casperscreens.com/videos](http://www.casperscreens.com/videos) for more installation information.

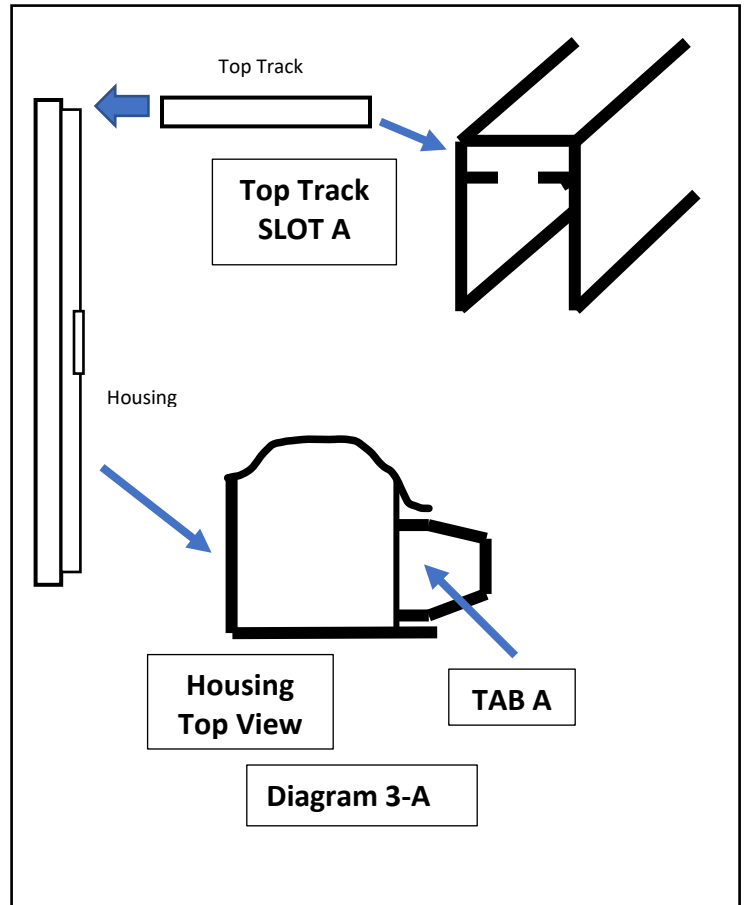
**STEP 1.** Install the handles by sliding the tabs on each handle into the handle channel on both sides of the pull bar, which is attached to the mesh, **with the Casper logo facing you.** (See Diagram 1) Slide the handles to the center of the housing.

**STEP 2.** Insert a boot into each end of the pull bar. You will want to use a crimping tool or pliers to crimp the end of the pull bar slightly, **BEFORE** inserting the boot to ensure a snug fit to prevent them from coming loose during use. (See Diagram 2)

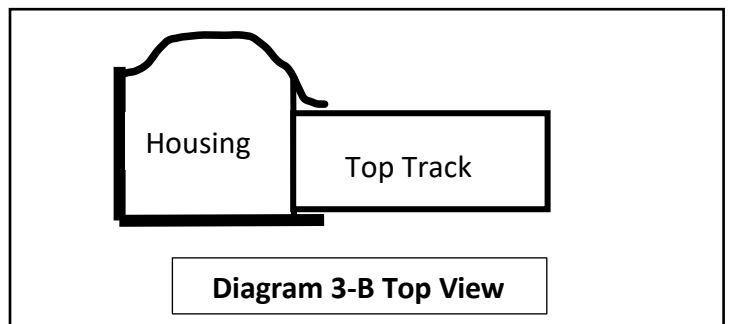
# CASPER

THE DISAPPEARING SCREENS

STEP 3. Place the housing with mesh into the door jamb against the flat surface at the point where it will be mounted. (Note: The housing can be placed on either the right or left side of the opening depending on your hinge side. The rounded side of the housing should face towards you) Insert the top track into the housing by sliding TAB A of the top cap of the housing into SLOT A on the top track (See Diagram 3-A). Be sure the tab is inserted completely, and the top track is  $\frac{1}{4}$ " into the opening of the housing. Note: The top track will be a tight fit into the housing, you may need to pry the edges of the housing entry back to insert the top track. (See Diagram 3-B).



STEP 4. Once the top track is inserted into the housing, with the housing and top track securely in the door jamb, insert a screw through the top track with your drill. (Note the screws are self-tapping and will drive through top track). (See Diagram 4, next page) This will hold the unit in place as you move to the next step.



STEP 5. Insert the bottom track into the housing by sliding the tab on the bottom cap of the housing into the slot on the bottom track, the same as you inserted the top track in Step 3. With the bottom track in place, insert a screw through the bottom track. (See Diagram 4)

# CASPER

THE DISAPPEARING SCREENS

STEP 6. Insert the Side Profile with Magnet into the door jamb on the vertical side opposite the housing. Slide it up so that it fits around the top track.

STEP 7. Pull the bottom track slightly towards you and position the side profile so that it fits around the bottom track. (Note: The side profile has some flex) Gently move the bottom track and side profile back into the door jamb making sure to align the frame where you will ultimately mount.

STEP 8. Now that the frame is assembled and aligned, begin installing the remaining screws according to the pattern shown in Diagram 5. Once complete, you are now ready to enjoy your Casper Disappearing Screen!

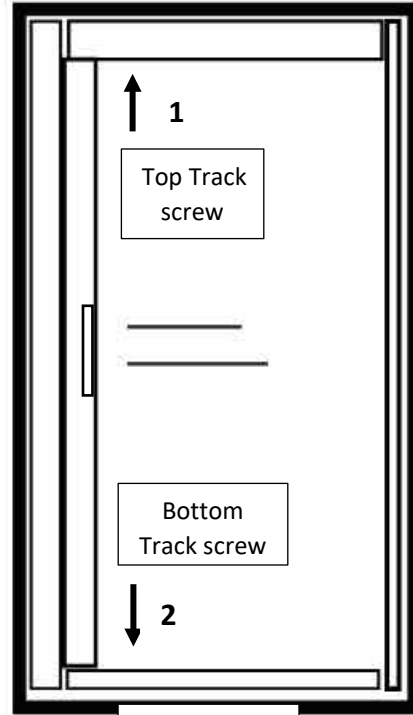


Diagram 4

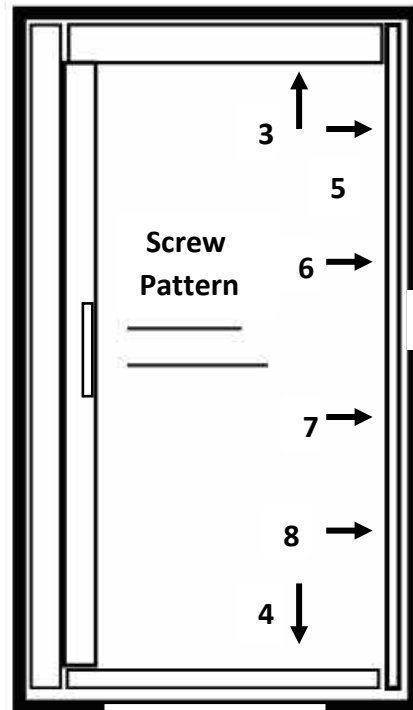


Diagram 5